

**\$540,000**

8810 S L Street  
Tacoma, WA 98444

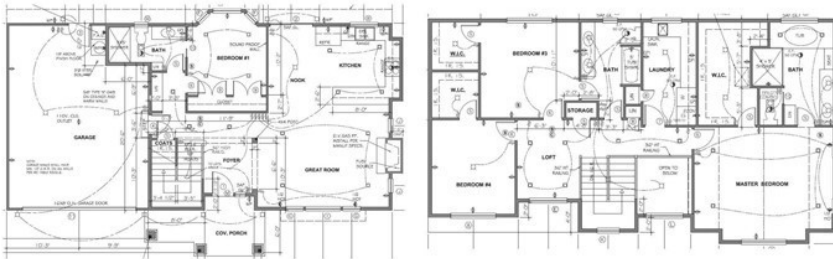
4 Bedrooms

2.75 Bathrooms

Built in 2021

MLS # 1719610

**Lot 10 Floor Plans**



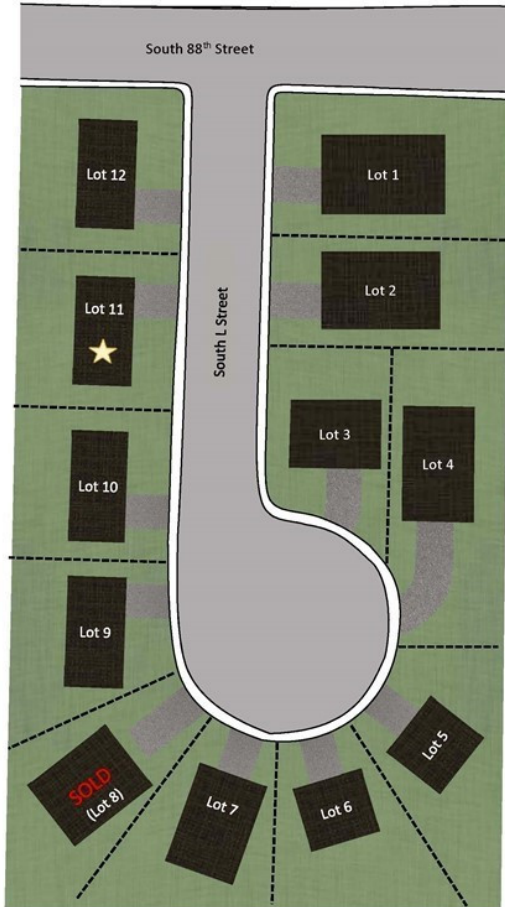
◀ **Lot 10** ▶

at GEM 88

2,340 sqft | 4 bed, 3 bath, 2 car | 2 story

Artist Rendering Only. In our continuing effort to exceed our buyer's expectations, specifications may change without notice. Square footage is approximate. See your NorthWest R.D.S. representative for elevation styles available in your community. All plans are copyright protected

## GEM 88



Map is artist's conception only and is not intended to be an actual depiction of the homes, lots, community amenities or landscaping. Map is not to scale. Lots vary in shape and size. Availability subject to change, please contact below Listing Broker for a complete list of available homes.

**Terri Han | 253-228-6213 | Email: [territwn@yahoo.com](mailto:territwn@yahoo.com)**

CAPTIVATING NEW HOMES fm Gem 88 bring true beauty & quality to the community! Gem 88 offers 12 single family homes, fully fenced & landscaped w/custom-designed, highly functional floor plans! Lot 10 features an open-concept great rm, gourmet kitchen, quartz countertops, gas range, as well as a bedroom/office & bath on main fl. On upper fl. you'll find a spacious vaulted master suite w/huge WIC, loft, bdrm 2 & 3 w/shared bath & large laundry room. Home equipped w/tankless water heater & energy efficient gas furnace! Spacious 2-car garage w/separate entrance access a backyard accessorized w/cute patio & deck for outdoor fun! Convenient location-only mins to I-5, shopping, restaurants, & JBLM! 2-10 HBW included! GPS add:1054 S 88th ST Tacoma

Listing provided by NWMLS & Skyline Properties, Inc.. The information contained herein has been obtained through sources deemed reliable but cannot be guaranteed as to its accuracy. Any information of special interest should be obtained through independent verification

